



# Take a Hike Activity Sheet — August Blackberry Maples Forest Preserve

There are many differences between dragonflies and damselflies. Dragonflies are generally stocky; damselflies are usually long and slender. Most dragonflies have eyes that touch, or nearly touch, at the top of their head. Damselflies' eyes are separated at the top of the head.

Damselflies wing pairs are similar in size and shape. Dragonflies' upper wings are generally dissimilar to their hind wings (usually broader at the base). Try to observe some dragonflies and damselflies at Blackberry Maples Forest Preserve and watch what they are doing. Take the Prairie Hill Loop Trail (0.86 miles) and see if you can check the additional characteristics below as being descriptive of dragonflies or damselflies.

Wings held open at rest, horizontally or downwards:

Dragonfly OR  Damselfly

Wings held closed, usually over abdomen:

Dragonfly OR  Damselfly

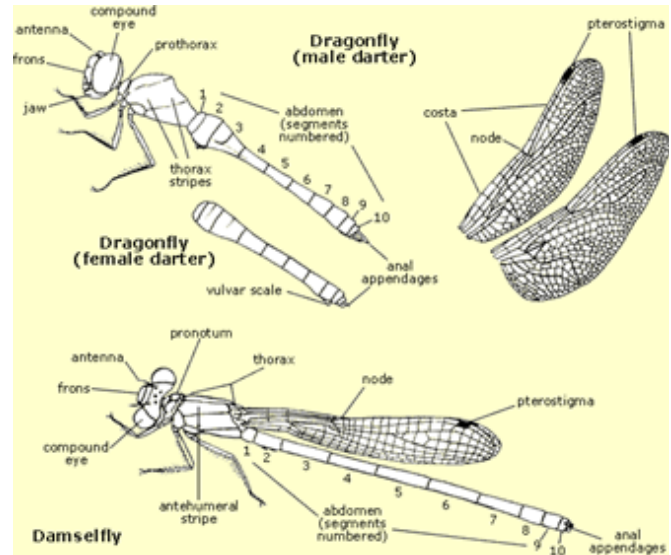
Perches on vegetation:

Dragonfly OR  Damselfly

More often hovers:

Dragonfly OR  Damselfly

Did you know? About 300 million years ago, dragonflies were huge. Their wingspans were up to two and a half feet!

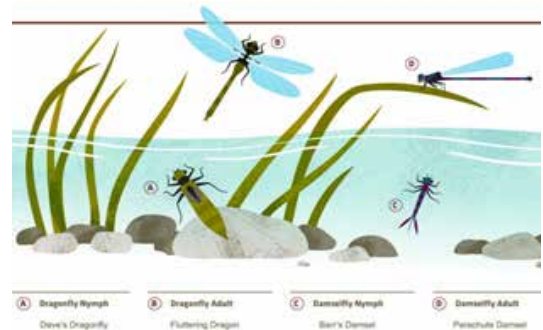


**The Forest Preserve District of Kane County invites you to Take a Hike!**

Complete 6 of the 12 "Take a Hike" activities at designated forest preserves this year to receive your Take a Hike patch. Earn credit for a hike by sending answers or your completed Activity Sheet(s) to our naturalist staff via:

- E-mail - [programs@kaneforest.com](mailto:programs@kaneforest.com)
- Fax - 630-513-1702
- Mail - Creek Bend Nature Center, 37W700 Dean St., Saint Charles, IL 60175

For more information, call 630-444-3190 or visit: [www.kaneforest.com](http://www.kaneforest.com).



\_\_\_\_\_

NAME \_\_\_\_\_

STREET ADDRESS \_\_\_\_\_

CITY, STATE ZIP \_\_\_\_\_

TELEPHONE \_\_\_\_\_

E-MAIL \_\_\_\_\_

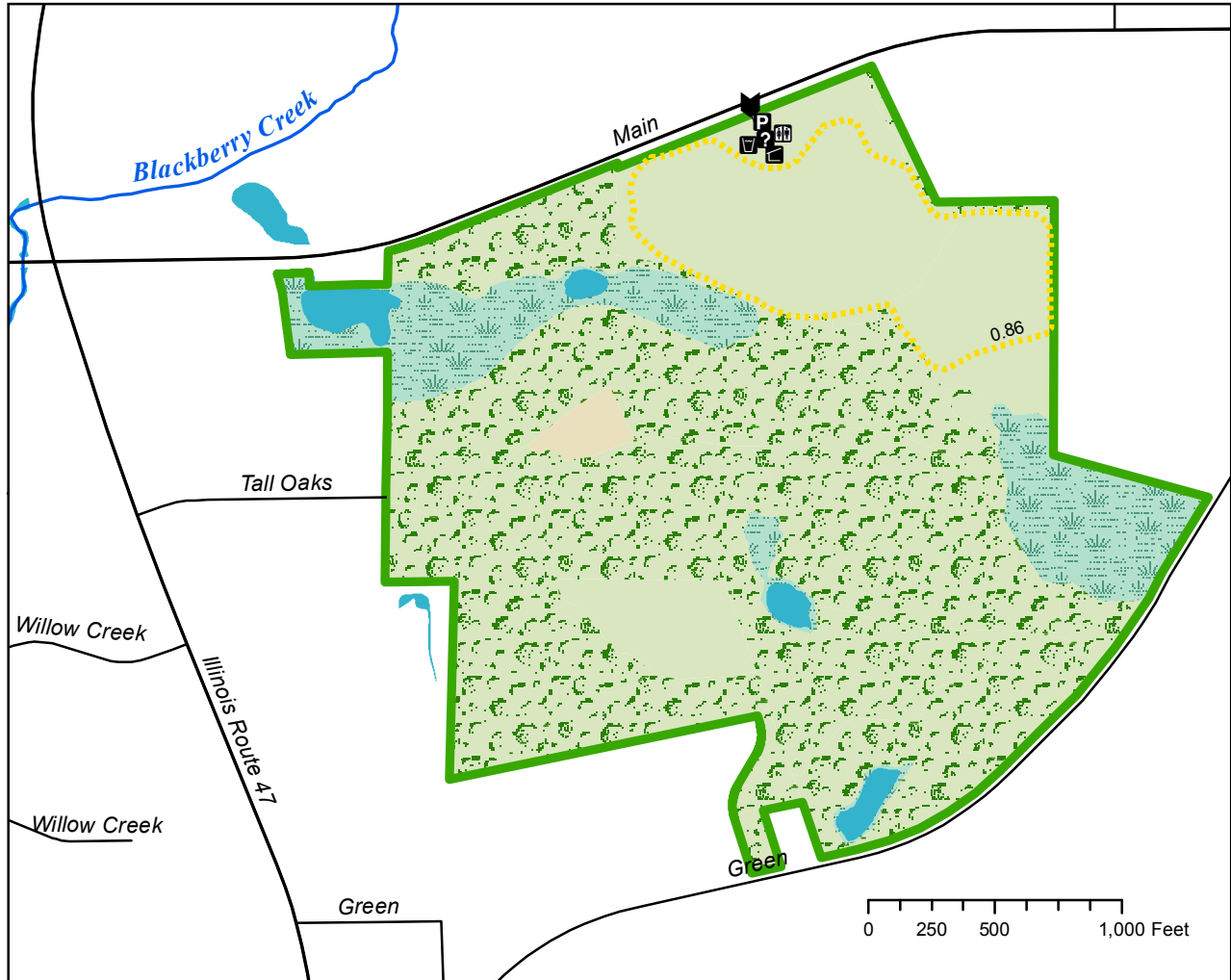
WOULD YOU LIKE TO BE ADDED TO THE MAILING LIST FOR DISTRICT NATURE PROGRAMS? IF SO, SELECT PREFERRED CONTACT METHOD:

E-MAIL  REGULAR MAIL





# Blackberry Maples Forest Preserve



Legend	
	Main Entrance
	Information
	Parking
	Shelter
	Restroom
	Water
	Road
	Creek
	Open Water
	Forest Preserve
Natural Area -	
	Grassland
	Maintained
	Wetland
	Woodland

## Trail Information

Prairie Hill Loop Trail 0.86 mile, mowed

43W375 Main Street,  
Elburn, IL 60119  
Approx. 0.54 miles east  
of IL Route 47

Acreage = 153  
Total trail miles = 0.86

Information: (630) 232-5980  
[www.kaneforest.com](http://www.kaneforest.com)  
Hours: Daily, Sunrise-Sunset

