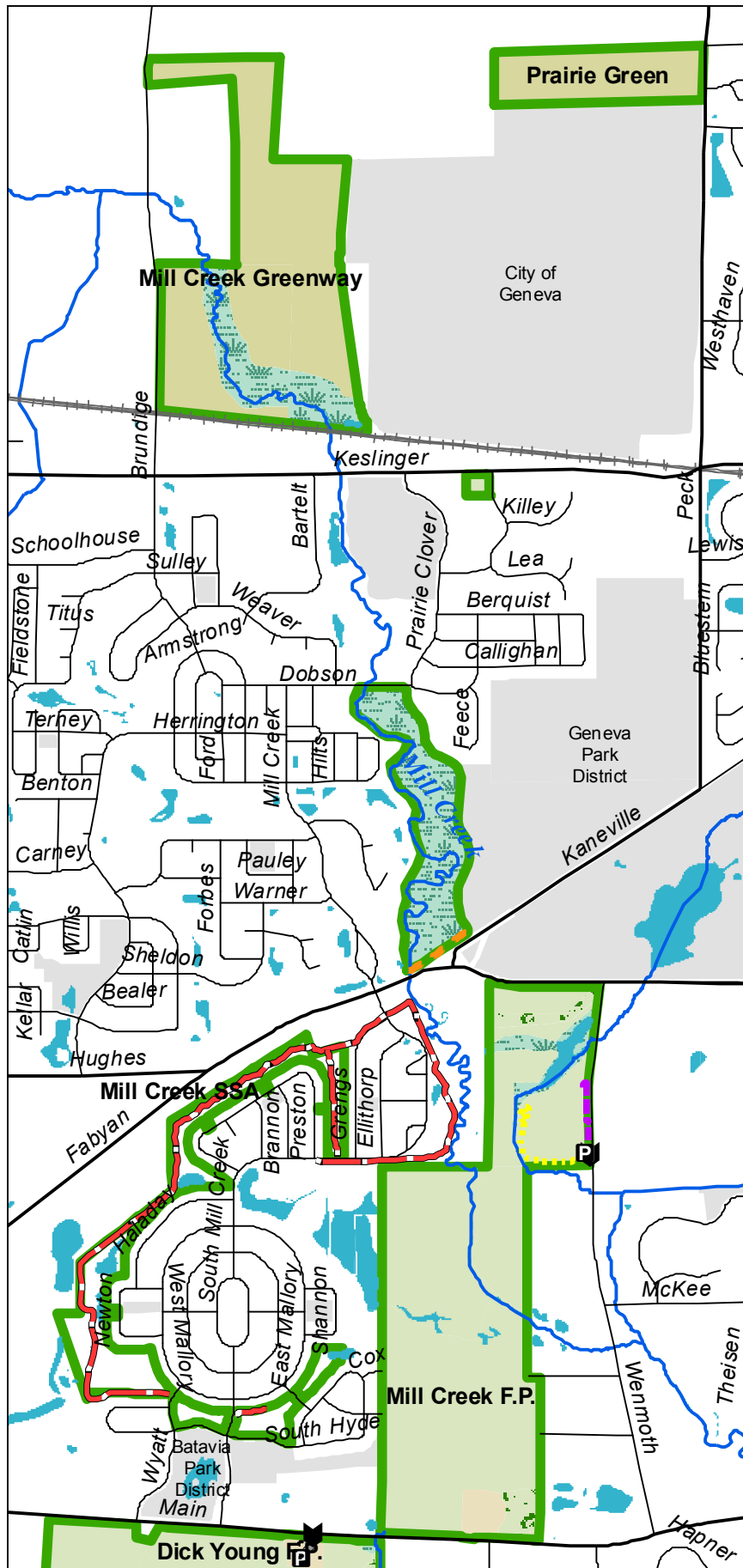


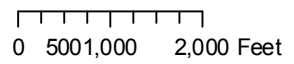


Mill Creek Forest Preserve



Legend

- Main Entrance
- Parking
- Road
- Railroad
- Creek
- Open Water
- Public Open Land
- Forest Preserve
- Cropland
- Grassland
- Maintained
- Wetland
- Woodland



Trail Information

- Coneflower Trail 0.19 miles, mowed
- Mill Creek Loop Trail 2.69 miles, asphalt
- North Connector Trail 0.17 miles, asphalt
- Prairie Central Trail 0.32 miles, mowed

OS650 Wenmoth Road,
Batavia, IL 60510
Approx. 0.4 miles south
of Fabyan Pkwy.

Acreage - Mill Creek FP = 395
Mill Creek Greenway = 177
Total trail miles = 3.37

Information: (630) 232-5980
www.kaneforest.com
Hours: Daily, Sunrise-Sunset

