

**FOR IMMEDIATE RELEASE:**

Aug. 30, 2024

**CONTACT:**

Laurie Metanchuk, Director of Community Affairs  
Brittany Kovach, Communications & Marketing Coordinator  
630-232-5980 forestpreserve@kaneforest.com

Forest Preserve District of Kane County  
1996 S. Kirk Rd., Ste. 320, Geneva, IL 60134  
www.kaneforest.com



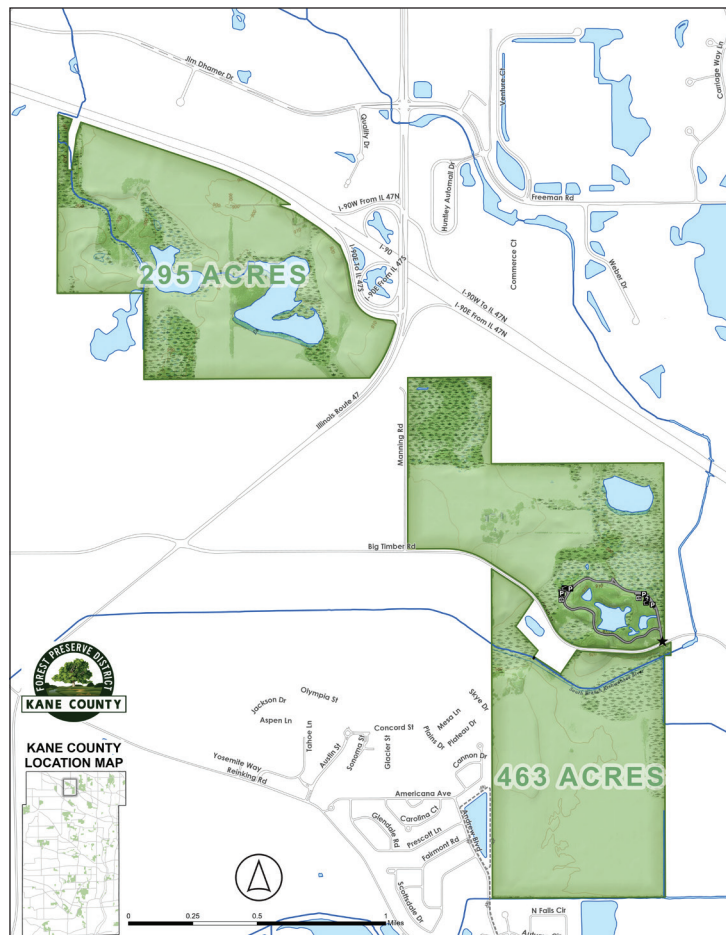
**Celebrating 100 Years**  
Conservation | Recreation | Education

**Forest Preserve District permanently protects 300 acres in Huntley**

GENEVA, IL — The Forest Preserve District of Kane County is now the proud steward of an additional 298 +/- acres in Huntley, containing old oaks and other high-quality habitat.

The property includes dozens of 125-year-old oak trees, never-been-plowed sedge meadow, and over 25 acres of prime waterfowl habitat, and is just northwest of Rutland Forest Preserve. District staff are ecstatic over the long-awaited investment.

“There just aren’t that many quality natural areas remaining like this that we can quickly convert to forest preserves. More often, we’re starting from seed with decades of restoration work required,” said Forest Preserve District Executive Director Benjamin Habarthur.



— MORE —

— **ADD ONE** —

Forest Preserve District permanently protects 300 acres in Huntley  
FOR IMMEDIATE RELEASE: Aug. 30, 2024

“Finding and protecting these rare places means our residents can enjoy these landscapes as soon as we get them open, rather than wait while we restore a property.”

The Forest Preserve District closed on the parcel Aug. 23, after having worked to close the deal for nearly two years. The acquisition was completed after legal consent was obtained by the Village of Huntley. Consent was given after 45 acres from the original purchase was removed and reserved for economic development.

“We are very thankful to the Village of Huntley, both their board and staff. This project would not have been possible without their support. The end result is exemplary in the way we can collaboratively balance our ecology with our economy, while continuing to thrive in both,” Haberthur said.

The addition brings total District holdings to 23,815 acres.

For more information on the Forest Preserve District of Kane County, visit [www.kaneforest.com](http://www.kaneforest.com).

— # # # —